

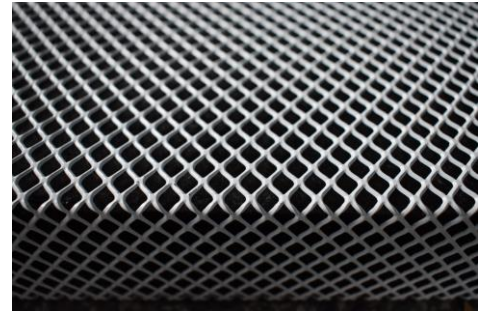
TECHNICAL DATA SHEET

Decibel Mesh Panel

Sound absorption for indoor

Product description and Technical Specification:

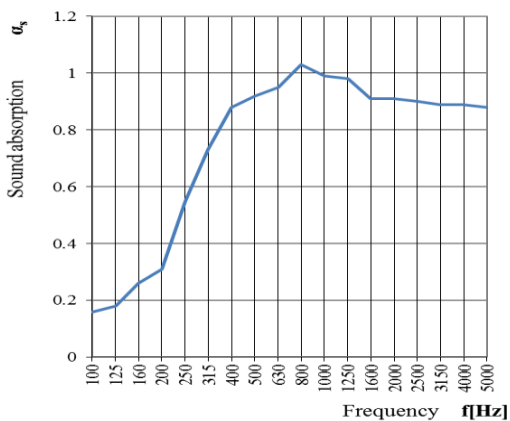
Metal mesh panel for sound absorption with the standard dimensions 350mmx850mmx50mm, 850mmx850mmx50mm and 850mmx1850mmx50mm. It can be painted in any RAL Color to match different project requirements. The sound absorption coefficient is $\alpha_w=0.85$



- Suitable only for indoor conditions
- Fire resistance
- Easy to install on all surfaces (concrete, bricks, metals)

PHYSICAL CHARACTERISTICS	Standard	Unit	Value			Tolerance
Thickness		mm	50			±5%
Length		mm	1850	850	850	±2%
Width		mm	850	850	350	±2%
Weight		kg	19	9	4	±10%

ACUSTIC CHARACTERISTICS	Standard	Unit	Value			Tolerance
Thickness		mm	50			±5%
Sound absorption coefficient α_w	EN ISO 345	-	0.85			



Sound absorption coefficient					
f [Hz]	α_s	f [Hz]	α_s	f [Hz]	α_s
100	0.16	400	0.88	1600	0.91
125	0.18	500	0.92	2000	0.91
160	0.26	630	0.95	2500	0.90
200	0.31	800	1.03	3150	0.89
250	0.55	1000	0.99	4000	0.89
315	0.73	1250	0.98	5000	0.88

TECNICAL CHARACTERISTICS	Standard	Unit	Value	Tolerance
Thermal conductivity (λ)	UNI EN 12667	W/mK	0.038	
Reaction to Fire Class	BS EN 13501	-	A1	
Max Service Temperature		°C	450	
Water Vapor Diffusion Coefficient (μ)		-	1	

PACHING AND STORING

The panels can be packed into three panels (for panels – 1850 mm / 840 mm / 50 mm and 850 mm / 850 mm / 50mm) or into five panels (for panels – 350 mm / 850 mm / 50 mm) using PE film